

ASL: Fingerspelling

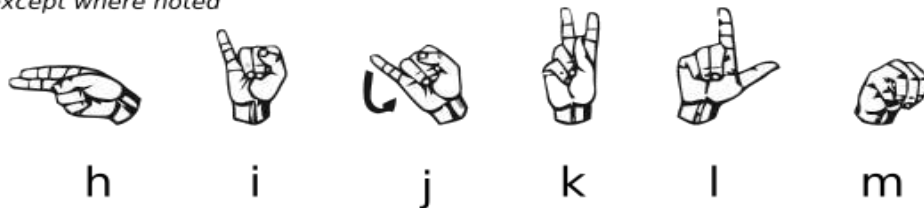


palm forward
thumb bent out

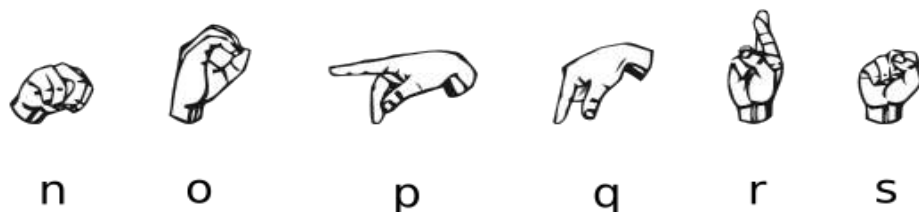
thumb also often
lower (like a claw)

palm in

*palm is always forward
except where noted*



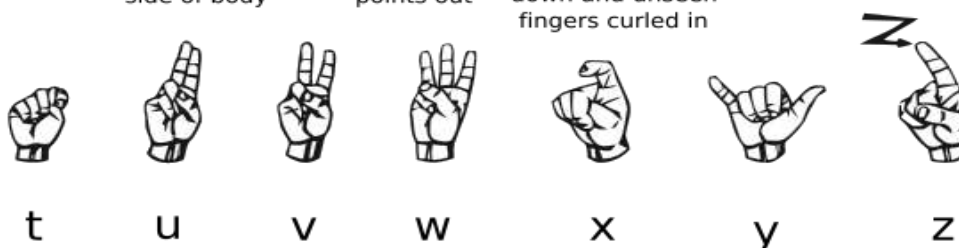
palm in



palm faces opposite
side of body

index finger
points out

like p but points
down and unseen
fingers curled in



palm forward
thumb can be over fingers
whole palm can be
slanted to side away from body

